



Precision Transducers Ltd.



...better loadcells by design!

## Model HPC *truckcell* vers II

STAINLESS STEEL COMPRESSION LOAD CELL

30T, 45T

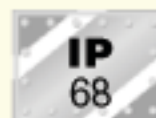
### APPLICATIONS

- Weighbridges & Truckscalls
- Railroad Weighbridges
- Tank, bin and silo weighing applications



### FEATURES

- Stainless steel construction
- OIML 3000 Divisions
- Single column design
- Power surge protected
- Sealed to IP68 standards
- ISO 9001 Certified manufacturing facilities





# Model HPC *truckcell* vers II

**STAINLESS STEEL COMPRESSION LOAD CELL**

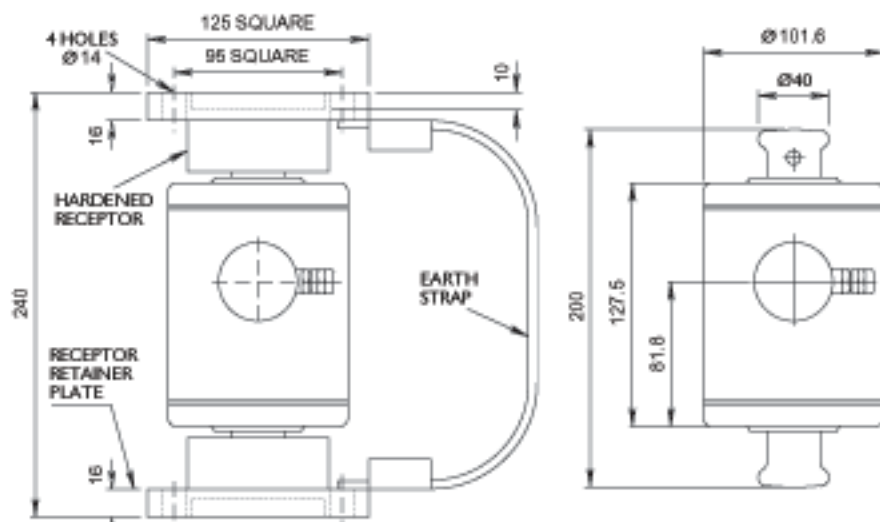
**30T, 45T**

## Ordering Information

Capacity	Model
30T	HPC-30
45T	HPC-45

## Cable Colour Code

Excitation +ve	<b>Red</b>
Sense +ve	<b>Brown</b>
Excitation -ve	<b>Black</b>
Sense -ve	<b>Blue</b>
Signal +ve	<b>Green</b>
Signal -ve	<b>White</b>



*A full range of accessories is available, please contact us for further details*

## Application

The HPC truckcell vers II (High Precision Compression) load cell is a state of the art measurement device. It's highly sophisticated and super sensitive electronics are housed in a rugged fully stainless steel enclosure. Fitted with power surge arrestors and inert gas filled for component longevity, the HPC provides for a true IP68 enclosure rating with greater than 300 hours protection at 1.5M immersion.

To ensure the exceptional performance of the HPC is optimized, PT offer specially designed enclosures. Please use the following codes when ordering accessories.

## Accessories (optional)

Hardened Load Receptors (2 pieces)	MHPCREC-30
Retaining Plates (2 pieces)	MHPCRET-30
Earthing Strap	MHPCETH-30
Complete Mount (receptors, retainers, earth strap and bolts)	MHPC-30
Anti-rotation	HPC-AR



## Specifications

Type	HPC
Nominal Capacity (tonne)	30, 45
Nominal Output at Capacity (mV/V)	2
Factory Calibration Mode	Compression
Linearity Error	0.020
Repeatability	0.010
Zero Return, creep (30 mins)	0.017
Temperature Effect on Span/10° C	0.010
Temperature Effect on Zero/10° C	0.015
Insulation Resistance - brg to gnd	>5000 M ohms
Insulation Resistance - cbl to gnd	>3000 M ohms
Compensated Temperature Range	-10° C to 50° C
Operating Temperature Range	-30° C to 60° C
Input Resistance	750 Ohms Nominal
Output Resistance	704±0.2 Ohms
Service Load	100% of Rated Capacity

Type	HPC
Safe Load	150% of Rated Capacity
Ultimate Load	300% of Rated Capacity
Excitation Range	5-18 Volts AC/DC
Environmental Protection	Hermetically Sealed (IP68)
Tilt, Maximum Transverse Displacement	15mm
Construction	Welded Stainless Steel
Power Surge Arrestors	Fitted as standard
Nett Weight	4.7Kg
Shipping Weight	5.0Kg
Package Dimensions	290 x 250 x 190mm
Storage Temperature Range	-50° C to 65° C
Cable Type	7.5mm braid screen, 6 cores x 0.25 mm
Cable Length	12 metres
Documentation Included	Accuracy Certificate